

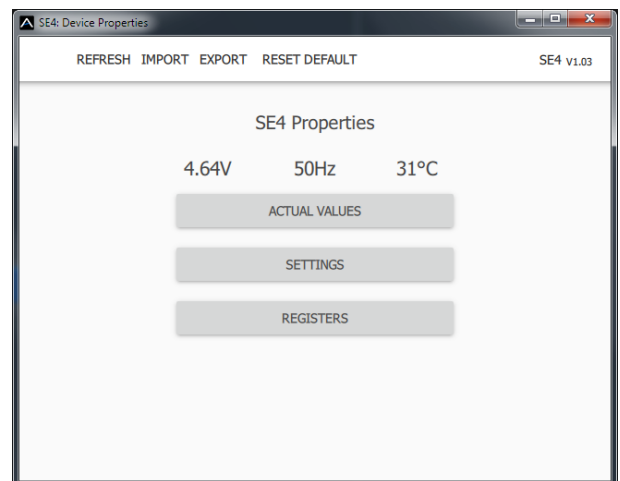
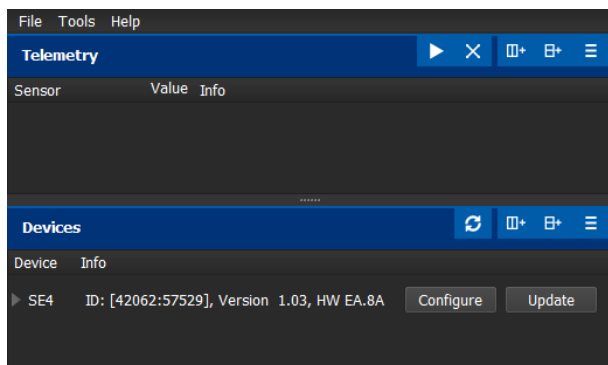
SE4 RELEASE NOTES

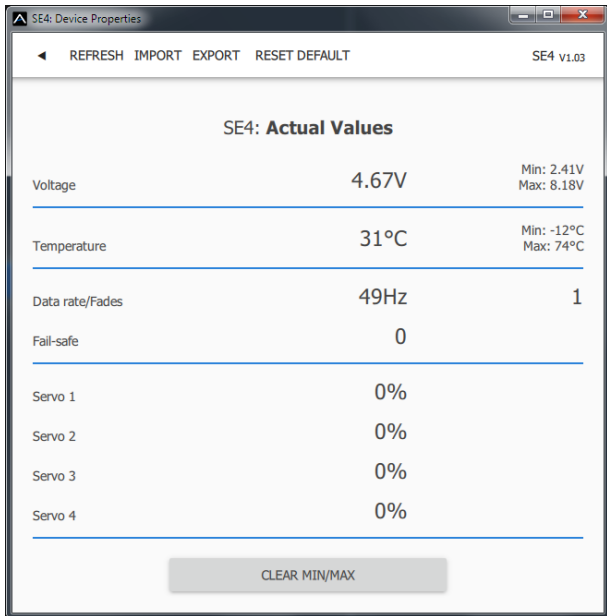
VERSION 1.04 (APRIL 2024)

- FrSky: Introduced compatibility with FPort and FBus capable receivers. The SE4 receives and decodes servo positions from the data stream. The device is able to decode all channel data (from FBus 8 up to FBus 24), only the first 16 channels may be assigned to the servo outputs.
- FrSky: The SE4 only reads the serial data from the receiver. It does not send any telemetry or configuration back, so the optional channel assignment has to be done using the MAV Manager software. It is possible to combine multiple SE4s and SE6s on a single bus.
- Frsky and Futaba SBus: Improved channel position matching, so that the servo positions at SE4 outputs are equal to the corresponding receiver outputs.

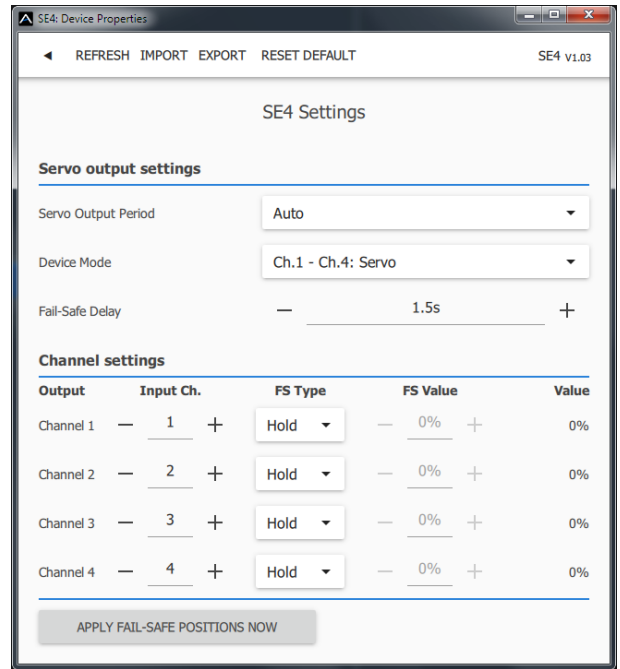
VERSION 1.03

- Improved compatibility with JETI EX Bus 24-channel mode (in connection with EX5, SE6 or additional SE4 devices).
- Added PowerBox P²Bus support on the Rx input, including telemetry (voltage/temperature).
- PC Configuration support using the MAV Manager software has been implemented. Use MAV Manager version 1.6.0 or later.





Actual telemetry values



SE4 Configuration

VERSION 1.02

- Improved telemetry expander protocol handling.

VERSION 1.01

- Initial version.