

ELECTRONICALLY CONTROLLED MAGNETIC SWITCH

MPSW15

USER MANUAL

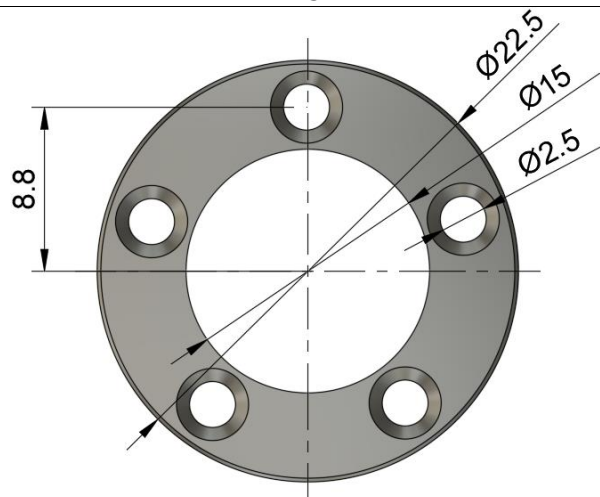
MPSW15 is a high-performance digital switch of the "REMOVE BEFORE FLIGHT" type.

It operates using magnetic activation – inserting the supplied magnetic activation pin into the opening disconnects the power (opens the circuit). Removing the pin switches the device on and activates the connected circuit. The powered-on state is indicated by illuminated LED indicators.

This system offers a safe and reliable solution for switching receivers, ignition systems, and other onboard electronics without the need for mechanical contacts.

The switch provides reliable and secure control via a magnet, supports various types of loads including inductive, and—being contactless—has no wear due to switching cycles or current flow.

Specifications	MPSW15
Dimensions	Ø22,5/Ø15 x 42 mm
Weight (incl. cables)	16 g
Cables	4x 1mm ² (17AWG)
Connectors	-
Continuous current	15A
Peak current (2s)	25A
Current when off	< 3uA
Operating temperature	-20 – 85°C
Switching voltage range	5 – 17V
Status LED	YES



INSTALLATION

Connect the device according to the markings on the product, where input and switched output are clearly indicated. Observe correct polarity:

Red wire = positive (+)

Black wire = negative (–)

We strongly recommend using polarized connectors to prevent reverse polarity, which could damage the switch. A magnet is included with the switch.

WARRANTY

The product is covered by a 24-month warranty from the date of sale, provided it has been used according to this manual, within the specified voltage range, and is not mechanically damaged.

When claiming warranty service, always include proof of purchase.

Both warranty and post-warranty service are provided by the manufacturer.

Distributor



Manufacturer

MAV Sense s.r.o.

E-mail: info@mavsense.com | Web: www.mavsense.com

WEEE – Disposal of Electrical Equipment

Electrical equipment marked with a crossed-out wheeled bin must not be disposed of with regular household waste. In EU countries, such equipment must be taken to designated collection or recycling centers (WEEE – Waste of Electrical and Electronic Equipment – Directive 2002/96/EC). You can return unwanted devices to your local collection facility. They will be disposed of or recycled safely and free of charge. By properly disposing of the product, you are making an important contribution to environmental protection.

